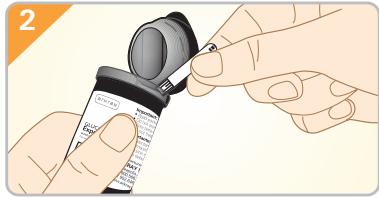
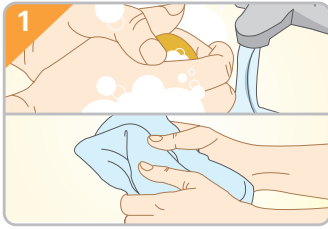
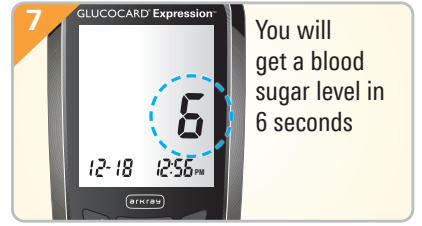
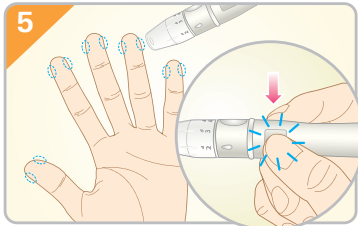


How to check your blood sugar

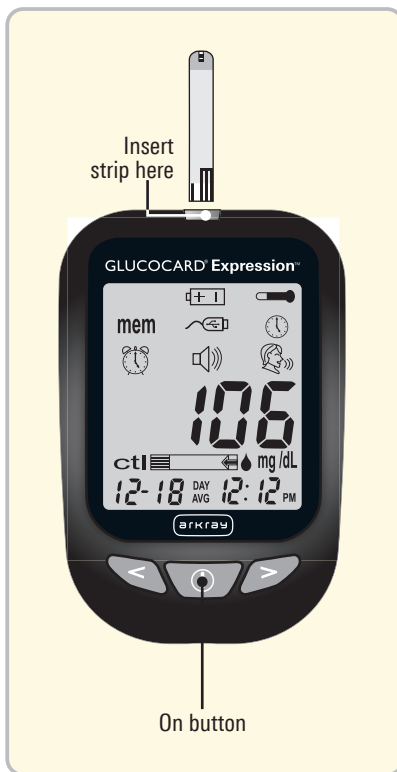



Use test strips within 3 months of first opening



You will get a blood sugar level in 6 seconds

How to use your GLUCOCARD[®] Expression[™] Blood Glucose Meter



To turn your meter on, press and HOLD 

To SETUP your meter, press  again

Use   to move between the pictures on your meter

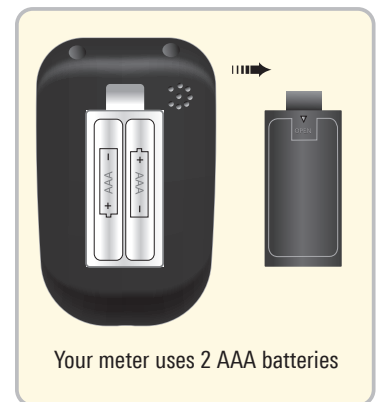
 Helps you set the DATE and TIME

 Helps you change language (ENGLISH or SPANISH)

 Helps change how LOUD your meter speaks to you

mem Lets you see your previous sugar levels

When you are done, PRESS and HOLD 



Your meter uses 2 AAA batteries

For questions about your meter, call ARKRAY Technical Customer Service at 800.566.8558.

For questions about your diabetes and medication management, call your health care provider.